

Our sustainability approach *Operations*

START



TERRE BLANCHE HOTEL SPA GOLF RESORT*****

115 SUITES & VILLAS • 4 RESTAURANTS • TWO 18-HOLE GOLF COURSES • THE ALBATROS GOLF PERFORMANCE CENTER • REAL ESTATE

3100 Route de Bagnols en Forêt • 83440 Tourrettes • Provence Côte d'Azur • France

www.terre-blanche.com

Our approach

The resort has been designed so that everything within it can be accessed either on foot or by electric, non-polluting golf carts.

This layout also encourages peaceful living in harmony with nature.



Waste management

- FIND OUT MORE



Energy management

- FIND OUT MORE



Forest management plan

- FIND OUT MORE



Flora and fauna

- FIND OUT MORE



Plant protection products

- FIND OUT MORE



Awareness-raising activities

- FIND OUT MORE



Economic policy

- FIND OUT MORE

HOUSEHOLD WASTE MANAGEMENT

GREEN WASTE MANAGEMENT

Household waste management

Terre Blanche set up waste sorting and organised the internal household waste collection system from the very beginning.

Each property is equipped with a bin store housing waste sorting containers.

A centralised collection area for household waste, close to the Terre Blanche reception, brings together all the private household waste to where it is collected by the municipal services contracted for its disposal.



HOUSEHOLD WASTE MANAGEMENT

GREEN WASTE MANAGEMENT

Green waste management

The maintenance of the golf courses, with an adapted fairway mowing cycle, enables the products derived from mowing to be left on site and transformed into fertiliser.

The products derived from aerating the courses are collected and scattered by spreading them in the undergrowth around the fairways, thereby helping to increase the plant cover and not contributing to landfill.



OUR PHILOSOPHY

FACILITIES

Our philosophy

The equipment energy audits carried out in 2015 define the five-year programme to improve energy performance while reducing the carbon footprint of the resort's activities.

The audits cover energy consumption (gas and electricity), but also areas for improvement to improve this consumption by limiting heat and cooling losses.

Energy assessments were carried out at the hotel, clubhouse and spa, with modelling and simulation of consumption and losses.

Energy savings thresholds define the objectives targeted in line with the environmental gains sought in relation to the investments required to comply with these objectives.



OUR APPROACH

WASTE MANAGEMENT

ENERGY MANAGEMENT

FOREST MANAGEMENT PLAN

FLORA AND
FAUNA

PLANT PROTECTION
PRODUCTS

AWARENESS-RAISING
ACTIVITIES

ECONOMIC
POLICY

OUR PHILOSOPHY

FACILITIES

Facilities

After 14 years in business, feedback and perfect knowledge of the operating processes allow us to offer answers and define the main areas for improvement in order to reduce energy losses.

In order to strike the right balance between optimum operation and control of energy consumption, an equipment renovation programme has been underway since 2010 with the aim of eliminating areas where energy is lost.

AUTOMATIC SLIDING DOORS

EXTERNAL WINDOWS AND DOORS

PERGOLAS WITH LOUVERED ROOFS

INCANDESCENT LIGHT BULBS

HOME AUTOMATION SUITES

COOLING SYSTEMS

Replacing the main French doors, automatic sliding doors are used by both our team and guests.

This equipment helps to eradicate bad practices (doors left open inadvertently or for convenience) while minimising heat loss due to using the doors normally.



OUR APPROACH

WASTE MANAGEMENT

ENERGY MANAGEMENT

FOREST MANAGEMENT PLAN

FLORA AND
FAUNA

PLANT PROTECTION
PRODUCTS

AWARENESS-RAISING
ACTIVITIES

ECONOMIC
POLICY

OUR PHILOSOPHY

FACILITIES

Facilities

After 14 years in business, feedback and perfect knowledge of the operating processes allow us to offer answers and define the main areas for improvement in order to reduce energy losses.

In order to strike the right balance between optimum operation and control of energy consumption, an equipment renovation programme has been underway since 2010 with the aim of eliminating areas where energy is lost.

AUTOMATIC SLIDING DOORS

EXTERNAL WINDOWS AND DOORS

PERGOLAS WITH LOUVERED ROOFS

INCANDESCENT LIGHT BULBS

HOME AUTOMATION SUITES

COOLING SYSTEMS

External windows and doors, with double thermal breaks (latest-generation profile), comply with 2012 thermal regulations.



OUR APPROACH

WASTE MANAGEMENT

ENERGY MANAGEMENT

FOREST MANAGEMENT PLAN

FLORA AND
FAUNA

PLANT PROTECTION
PRODUCTS

AWARENESS-RAISING
ACTIVITIES

ECONOMIC
POLICY

OUR PHILOSOPHY

FACILITIES

Facilities

After 14 years in business, feedback and perfect knowledge of the operating processes allow us to offer answers and define the main areas for improvement in order to reduce energy losses.

In order to strike the right balance between optimum operation and control of energy consumption, an equipment renovation programme has been underway since 2010 with the aim of eliminating areas where energy is lost.

AUTOMATIC SLIDING DOORS

EXTERNAL WINDOWS AND DOORS

PERGOLAS WITH LOUVERED ROOFS

INCANDESCENT LIGHT BULBS

HOME AUTOMATION SUITES

COOLING SYSTEMS

Pergolas with automatically-adjusted roof slats are used on the terraces of the Faventia and Gaudina restaurants.

The angle of the slats regulates the heat intake and helps to maintain a comfortable temperature in rooms exposed to sunlight.



OUR APPROACH

WASTE MANAGEMENT

ENERGY MANAGEMENT

FOREST MANAGEMENT PLAN

FLORA AND
FAUNA

PLANT PROTECTION
PRODUCTS

AWARENESS-RAISING
ACTIVITIES

ECONOMIC
POLICY

OUR PHILOSOPHY

FACILITIES

Facilities

After 14 years in business, feedback and perfect knowledge of the operating processes allow us to offer answers and define the main areas for improvement in order to reduce energy losses.

In order to strike the right balance between optimum operation and control of energy consumption, an equipment renovation programme has been underway since 2010 with the aim of eliminating areas where energy is lost.

AUTOMATIC SLIDING DOORS

EXTERNAL WINDOWS AND DOORS

PERGOLAS WITH LOUVERED ROOFS

INCANDESCENT LIGHT BULBS

HOME AUTOMATION SUITES

COOLING SYSTEMS

Incandescent bulbs are being replaced by energy-efficient equipment, some of which has sensors to minimise use as much as possible.



OUR APPROACH

WASTE MANAGEMENT

ENERGY MANAGEMENT

FOREST MANAGEMENT PLAN

FLORA AND
FAUNA

PLANT PROTECTION
PRODUCTS

AWARENESS-RAISING
ACTIVITIES

ECONOMIC
POLICY

OUR PHILOSOPHY

FACILITIES

Facilities

After 14 years in business, feedback and perfect knowledge of the operating processes allow us to offer answers and define the main areas for improvement in order to reduce energy losses.

In order to strike the right balance between optimum operation and control of energy consumption, an equipment renovation programme has been underway since 2010 with the aim of eliminating areas where energy is lost.

AUTOMATIC SLIDING DOORS

EXTERNAL WINDOWS AND DOORS

PERGOLAS WITH LOUVERED ROOFS

INCANDESCENT LIGHT BULBS

HOME AUTOMATION SUITES

COOLING SYSTEMS



The suites are linked to a network so that their heating and air conditioning can be managed via the Terre Blanche Hotel Bookings department.



OUR APPROACH

WASTE MANAGEMENT

ENERGY MANAGEMENT

FOREST MANAGEMENT PLAN

FLORA AND
FAUNA

PLANT PROTECTION
PRODUCTS

AWARENESS-RAISING
ACTIVITIES

ECONOMIC
POLICY

OUR PHILOSOPHY

FACILITIES

Facilities

After 14 years in business, feed-back and perfect knowledge of the operating processes allow us to offer answers and define the main areas for improvement in order to reduce energy losses.

In order to strike the right balance between optimum operation and control of energy consumption, an equipment renovation programme has been underway since 2010 with the aim of eliminating areas where energy is lost.

AUTOMATIC SLIDING DOORS

EXTERNAL WINDOWS AND DOORS

PERGOLAS WITH LOUVERED ROOFS

INCANDESCENT LIGHT BULBS

HOME AUTOMATION SUITES

COOLING SYSTEMS

Three cooling units and cooling towers have been replaced by two latest-generation air condensing units, operating with R134A refrigerant, reducing health risks to zero, with notable energy savings.



ECOLOGICAL CLEARING

PRUNING

RENEWAL

THE CHÂTEAU BOUGE FOREST PARK

Ecological clearing

Instead of mechanical clearing, which is only used in a few difficult-to-access areas, Terre Blanche has opted for win-win clearing using a team of 4 donkeys, who have become Terre Blanche's mascots.

This sustainable ecological clearing contributes to wild space maintenance, fire safety and biotope preservation.

The resort's woods and undergrowth are cleared according to a multi-year plan inspired by best practices in fallow farming.

This selective clearing maintains natural habitats without disturbing biodiversity thanks to noise pollution reduced to nothing, natural recycling of material produced through clearing and respect for existing flora via natural selectivity.



OUR APPROACH

WASTE MANAGEMENT

ENERGY MANAGEMENT

FOREST MANAGEMENT PLAN

FLORA AND
FAUNA

PLANT PROTECTION
PRODUCTS

AWARENESS-RAISING
ACTIVITIES

ECONOMIC
POLICY

ECOLOGICAL CLEARING

PRUNING

RENEWAL

THE CHÂTEAU BOUGE FOREST PARK

Pruning

Prior to any cutting or pruning of remarkable woods, such as the wood surrounding the Château Bouge, Terre Blanche appoints an environmentalist specialising in natural Mediterranean environments.

The audit of the natural habitat, flora and remarkable trees to be preserved defines a pruning programme intended to maintain the remarkable natural spaces in perfect health.

The products resulting from pruning are shredded then spread in the undergrowth, and so reintroduced into the natural environment.



OUR APPROACH

WASTE MANAGEMENT

ENERGY MANAGEMENT

FOREST MANAGEMENT PLAN

FLORA AND
FAUNA

PLANT PROTECTION
PRODUCTS

AWARENESS-RAISING
ACTIVITIES

ECONOMIC
POLICY

ECOLOGICAL CLEARING

PRUNING

RENEWAL

THE CHÂTEAU BOUGE FOREST PARK

Renewal

Wherever necessary, and given natural life cycles, Terre Blanche replaces dead trees with piles of timber left in their place to create bug hotels, and undertakes reforestation using endemic species that are more resistant to pests.



OUR APPROACH

WASTE MANAGEMENT

ENERGY MANAGEMENT

FOREST MANAGEMENT PLAN

FLORA AND
FAUNA

PLANT PROTECTION
PRODUCTS

AWARENESS-RAISING
ACTIVITIES

ECONOMIC
POLICY

ECOLOGICAL CLEARING

PRUNING

RENEWAL

THE CHÂTEAU BOUGE FOREST PARK

The Château Bouge forest park

Terre Blanche manages the Château Bouge forest park based on an audit report prepared by a specialist.

Made up of remarkable and endangered species, this park is maintained to ensure regeneration by creating clearings that make room for the light required for the development of the undergrowth.



[OUR APPROACH](#)[WASTE MANAGEMENT](#)[ENERGY MANAGEMENT](#)[FOREST MANAGEMENT PLAN](#)[FLORA AND FAUNA](#)[PLANT PROTECTION PRODUCTS](#)[AWARENESS-RAISING ACTIVITIES](#)[ECONOMIC POLICY](#)

WILD ANIMALS

[ADDITIONAL ANIMALS](#)[BEES, ECOLOGICAL SENTINELS](#)[THE HERB GARDEN](#)

Wild animals

Terre Blanche is a haven of peace for birds.

Couples of pheasants, wild ducks and geese come here to rest, and some have even taken up residence.

Deer have also come to Terre Blanche seeking protection from predators and even hunters eager to regulate the deer population.

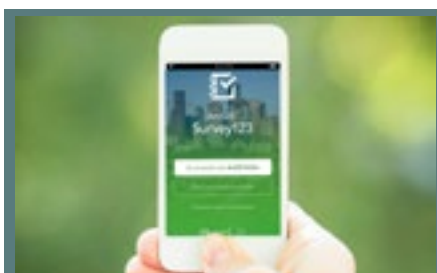
Unfortunately for the fairways, a few wild boar sounders find refuge there to feed away from the hunt.

A biological corridor has been created between Terre Blanche and Saint Cassian Lake, a few kilometres away.

Our waterfalls, gullies and lakes are all wetlands or reed beds conducive to the development of the predator

population and are naturally stocked with fish.

Through the creation of lakes and the constant presence of white or dormant water, without which life would not exist, Terre Blanche contributes to the conservation of endemic wild species (turtles, amphibians, fish, etc.).



TAKE PART
IN OUR BIOLOGICAL APPROACH,
IT'S EASY !

[READ MORE](#)

[OUR APPROACH](#)[WASTE MANAGEMENT](#)[ENERGY MANAGEMENT](#)[FOREST MANAGEMENT PLAN](#)[FLORA AND
FAUNA](#)[PLANT PROTECTION
PRODUCTS](#)[AWARENESS-RAISING
ACTIVITIES](#)[ECONOMIC
POLICY](#)[WILD ANIMALS](#)[**ADDITIONAL ANIMALS**](#)[BEES, ECOLOGICAL SENTINELS](#)[THE HERB GARDEN](#)

Additional animals

Terre Blanche has set up a programme to reintroduce endemic species, which unfortunately have virtually disappeared in the wild, such as swans and geese.

Black bass and Koi carp, in pre-defined numbers, have been introduced into the reservoirs to maintain an ecological balance.



Bees, ecological sentinels

Terre Blanche has set up beehives near the main carefully preserved natural areas.

Bees are the first visible indicator of the good ecological health of our natural spaces.

The good practices implemented at Terre Blanche in the sensible use of ecological and pharmaceutical plant protection products enable us to consume the honey produced, which is free from chemical pollution.

Bees are also one of the best ways to raise awareness among the younger generations of the absolute need to maintain a biotope conducive to pollination at all times, without which all life on earth will disappear.

Discovery workshops are organised every year at the Kids' club to teach children about the role of bees and the honey-making process.

They increase awareness of the fragility of the natural environment and the consequences of each action.

Insect life is also remarkably preserved at Terre Blanche, as demonstrated by the swallows and other insect and rodent hunters.

Terre Blanche produces its own honey, which is a treat and a souvenir that can also be enjoyed in our restaurants.



[OUR APPROACH](#)[WASTE MANAGEMENT](#)[ENERGY MANAGEMENT](#)[FOREST MANAGEMENT PLAN](#)[FLORA AND FAUNA](#)[PLANT PROTECTION PRODUCTS](#)[AWARENESS-RAISING ACTIVITIES](#)[ECONOMIC POLICY](#)[WILD ANIMALS](#)[ADDITIONAL ANIMALS](#)[BEES, ECOLOGICAL SENTINELS](#)[**THE HERB GARDEN**](#)

The herb garden

A herb garden in the very heart of the resort offers around fifteen herbs which are used by our Chefs.

It is also a means of raising awareness of the seasonal nature of produce, which we tend to forget due to the development of supermarkets and globalisation.

Accepting the seasonal constraints is the first step towards a sustainable and environmentally responsible approach.



PLANT PROTECTION TREATMENTS

CLEANING PRODUCTS

Plant protection treatments

Terre Blanche favours the use of (organic and biological) biostimulants.

Low toxicity non-persistent products are chosen to protect biodiversity and users (staff and guests).

The products used are all validated by European Directive 91/414/EEC.

The spreading machinery's residues and washing water are recovered and treated by the EVAPOPHYT system (forced evaporation down to a concentration of the products that can then be disposed of in specialised landfill and filtration of the evaporation vapours on activated charcoal).

The cleaning area is sheltered from bad weather to avoid unnecessarily treating rainwater.



Cleaning products

Terre Blanche favours the use of cleaning products with environmental labels.

Each work unit team is provided with information related to the harmfulness or even toxicity of cleaning products, the products used and the manufacturers' safety data sheets, the updates of which are available online.

These Safety Data Sheets specify:

- Product identification
- Hazard identification
- Product composition
- Accidental release measures
- Physical and chemical properties
- Areas of use, etc.



Staff Training

As part of an annual training schedule, staff receive qualification-based CQP (Professional Qualification Certificate) training.

The teams in charge of operating equipment that can have an environmental impact (plant protection treatments, etc.) receive internal or external training sanctioned by:

- A Certiphyto (individual phytopharmaceutical product certificate) for purchasers
- A Certiphyto for users
- A Certificate of Aptitude in the Control of Specific Equipment (CACES)



[OUR APPROACH](#)[WASTE MANAGEMENT](#)[ENERGY MANAGEMENT](#)[FOREST MANAGEMENT PLAN](#)[FLORA AND FAUNA](#)[PLANT PROTECTION PRODUCTS](#)[AWARENESS-RAISING ACTIVITIES](#)[ECONOMIC POLICY](#)[STAFF TRAINING](#)[GEO CERTIFIED® ECOLABEL](#)[SILVER LABEL](#)[INFORMATION](#)[CUSTOMER AWARENESS](#)[COMMUNICATION](#)[DISCOVERY ACTIVITIES](#)

The GEO Certified® ecolabel

Terre Blanche has the GEO Certified® (Golf Environment Organization) certification, a guarantee of quality and seriousness, providing international exposure for the activities carried out by the resort.

The GEO Certified® ecolabel is based on the three major pillars of sustainable development: environmental, social and economic, particularly as regards the two golf courses and dedicated equipment (Golf Course Maintenance Department).



OUR APPROACH

WASTE MANAGEMENT

ENERGY MANAGEMENT

FOREST MANAGEMENT PLAN

FLORA AND
FAUNA

PLANT PROTECTION
PRODUCTS

**AWARENESS-RAISING
ACTIVITIES**

ECONOMIC
POLICY

STAFF TRAINING

GEO CERTIFIED® ECOLABEL

SILVER LABEL

INFORMATION

CUSTOMER AWARENESS

COMMUNICATION

DISCOVERY ACTIVITIES

The Silver Label of the Golf Programme for Biodiversity

Terre Blanche has also been awarded the Silver Label of the Golf Programme for Biodiversity launched by the French Golf Federation in partnership with the Natural History Museum. This label demonstrates the Resort's commitment to improving knowledge, protecting and enhancing its natural heritage.



OUR APPROACH

WASTE MANAGEMENT

ENERGY MANAGEMENT

FOREST MANAGEMENT PLAN

FLORA AND
FAUNA

PLANT PROTECTION
PRODUCTS

AWARENESS-RAISING
ACTIVITIES

ECONOMIC
POLICY

STAFF TRAINING

GEO CERTIFIED® ECOLABEL

SILVER LABEL

INFORMATION

CUSTOMER AWARENESS

COMMUNICATION

DISCOVERY ACTIVITIES

Information

Embracing the sustainable approach means understanding Terre Blanche.

Perfect knowledge of its history, since its creation, is essential for adhering to the sustainable approach and promoting it on a daily basis.

To this end, Terre Blanche has created an interactive collaborative workspace that provides staff with information materials, such as "Terre Blanche and its History", the Safety Booklet, the Ecology press kit and the supplier charter.



OUR APPROACH

WASTE MANAGEMENT

ENERGY MANAGEMENT

FOREST MANAGEMENT PLAN

FLORA AND
FAUNA

PLANT PROTECTION
PRODUCTS

**AWARENESS-RAISING
ACTIVITIES**

ECONOMIC
POLICY

STAFF TRAINING

GEO CERTIFIED® ECOLABEL

SILVER LABEL

INFORMATION

CUSTOMER AWARENESS

COMMUNICATION

DISCOVERY ACTIVITIES

Raising guests' awareness

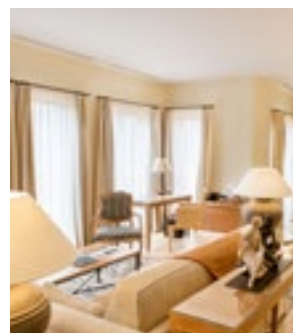
The environmentally responsible approach must be comprehensive and shared.

The key to success is our guests' participation and respectful behaviour.

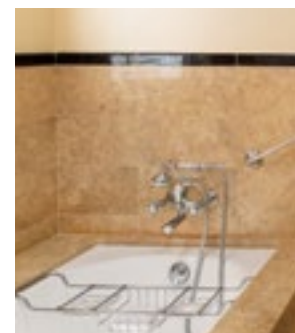
To this end, Terre Blanche raises its guests' awareness through a few simple actions such as:



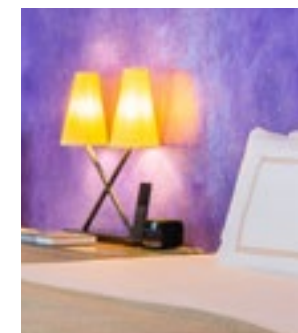
- Support our environmentally responsible approach to limit towel and linen changes (explanatory materials placed in bedrooms and bathrooms)



- Turn off the lights when leaving a room and close doors and windows



- Avoid leaving taps, showers and baths running unnecessarily



- Ask our teams for any information on our environmentally responsible approach

[OUR APPROACH](#)[WASTE MANAGEMENT](#)[ENERGY MANAGEMENT](#)[FOREST MANAGEMENT PLAN](#)[FLORA AND FAUNA](#)[PLANT PROTECTION PRODUCTS](#)[AWARENESS-RAISING ACTIVITIES](#)[ECONOMIC POLICY](#)[STAFF TRAINING](#)[GEO CERTIFIED® ECOLABEL](#)[SILVER LABEL](#)[INFORMATION](#)[CUSTOMER AWARENESS](#)[COMMUNICATION](#)[DISCOVERY ACTIVITIES](#)

Communication

When passing through pre-defined sectors, the golf carts' GPS displays information about the remarkable flora and fauna found nearby.

Information panels are installed at strategic points that golfers can read to learn about all aspects of the ecological approach.



Discovery activities

An online activity guide is offered to guests, inviting them to discover the Canton of FAYENCE and the surrounding region:

- Discovering the hilltop villages of the Haut Var
- Local production (olive oil, wine, fragrances, etc.)
- History of perfume manufacturing
- Electric bike excursions from Terre Blanche

Nature discovery activities are offered to children at the "Kids' Club":

- Explore the fauna and flora of Terre Blanche
- Picnics
- Bee workshop to appreciate their major and essential contribution to the proper functioning of the ecosystem, without which no life on earth would be possible.

- Find out more



[OUR APPROACH](#)[WASTE MANAGEMENT](#)[ENERGY MANAGEMENT](#)[FOREST MANAGEMENT PLAN](#)[FLORA AND
FAUNA](#)[PLANT PROTECTION
PRODUCTS](#)[AWARENESS-RAISING
ACTIVITIES](#)[ECONOMIC
POLICY](#)[OUR PHILOSOPHY](#)[THE SUPPLIER CHARTER](#)[PRODUCTS](#)

Our philosophy

An environmentally responsible approach and sustainable development only make sense when applied in a comprehensive and holistic manner.

Our duty is not only to apply virtuous measures within Terre Blanche, but to involve our partners, and even demand the same approach from them. This approach will then spread, globalising the objectives that we have imposed on ourselves.

If we just transferred the negative environmental impact of our business to third parties, it would have no effect except making us feel good.



The supplier charter

The supplier charter, which is the cornerstone of all business negotiations, defines the obligations and responsibilities that we intend to respect in relation to:

Social responsibility

- Monitoring labour
- Harassment
- Discrimination
- Freedom of association
- Health and safety

Environmental responsibility

- Implementation of environmental resource management
- Training of personnel to manage the environmental impacts of the activity concerned
- Waste management, treatment and recycling

This supplier charter is a tool for selecting partners, with the aim of extending the environmental approach beyond the boundaries of the resort so as not to divert and transfer the environmental impacts linked to our business to third parties.



Products

Terre Blanche uses organic products in its various restaurants to design its menus.

Our restaurant menus take into account the availability of seasonal produce.

All eggs, dried fruit and cereals are 100% organic. The summer restaurant "Le Tousco Grill" offers organic salad vegetables.

The cellar gives pride of place to organic and biodynamic wines.

